



OUR
LADY'S
SCHOOL
TERENURE





OUR
LADY'S
SCHOOL
TERENURE

A message from our Head Girl GRACE DUFFY

Courage



St. Brigid's House
B House

Compassion



St. Colmcille's House
C House

Community



St. Lawrence's House
L House

Charity



St. Muireann's House
M House

Conscience



St. Patrick's House
P House



OUR
LADY'S
SCHOOL
TERENURE

A message from our
L House Captain
ALISON HERBERT

Courage



St. Brigid's House
B House

Compassion



St. Colmcille's House
C House

Community



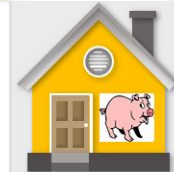
St. Lawrence's House
L House

Charity



St. Muireann's House
M House

Conscience



St. Patrick's House
P House



History and Context

- Founded in 1953 by the Religious of Christian Education, a French order founded in 1817 to provide a Christian Education for girls.
- The original school building is from the 1950's
- The school joined the free education scheme in the late 1960's.
- Joined Le Chéile Trust 2009. Le Chéile Education Centre 2021.
- SÍol Board and Le Chéile in 2017
- Ethos Christian values
- Academic excellence
- Wellbeing
- 5 Houses a place of belonging





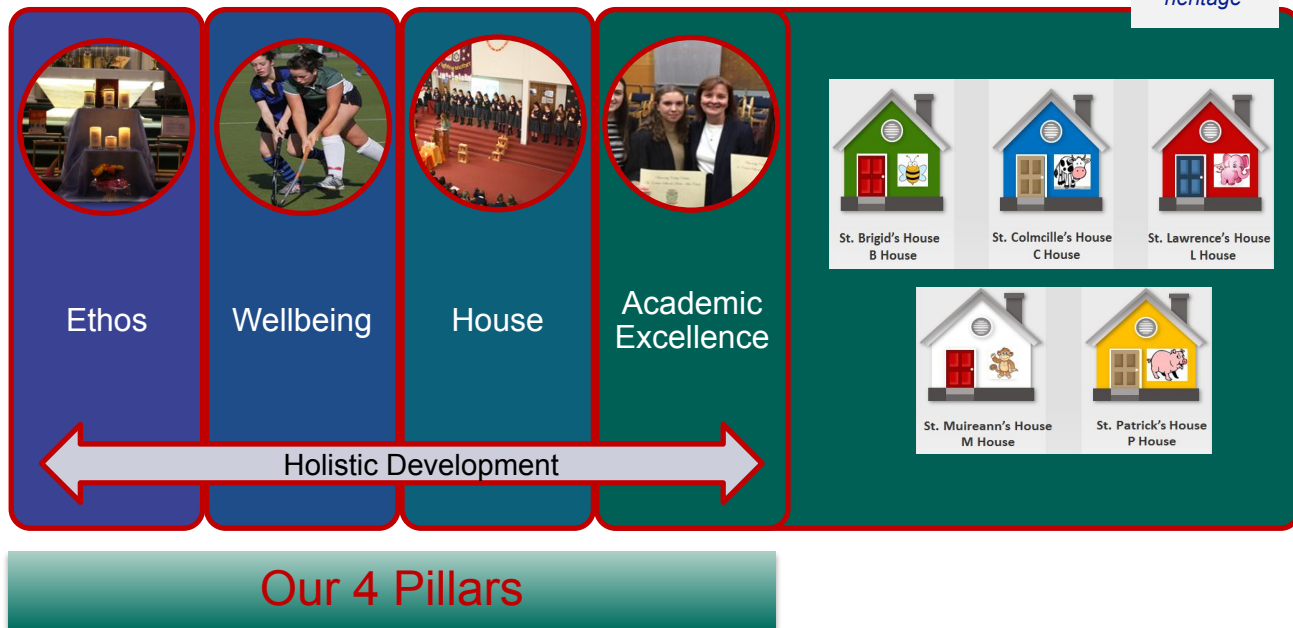
Vision and Mission Statement

- Our Lady's School is a community that embraces **Christian values**. The education it provides is rooted in a deep sense of **faith**.
- We aim to create a positive inclusive environment which enables everyone to reach their **full potential**. We promote **mutual respect** within the school community and strive to provide a **happy and secure** atmosphere which **fosters a love of learning**.
- We encourage the development of the whole person, by fostering the **personal, spiritual and moral development** of every student. The **realisation of individual talents and academic excellence** is paramount.
- We aim to create a **friendly, healthy, safe and caring** environment which affirms **our pride in the school**.
- We promote the development of the **necessary skills** so that students may become **responsible members of society**.
- It is our wish to see every student leave Our Lady's School with **moral integrity and a heightened sense of social conscience**.



Creating a unique environment for learning and development

*'Building a
path for the
future,
rooted in
our
heritage'*





Our Lady's School Partnerships

'Building a path for the future, rooted in our heritage'



Religious of Christian Education & Le Chéile Trust



Board of Management



Our Lady's Students & Staff



Parents



Past Pupils



Local Community



T. V. students, Jessica Rynne and Caoimhe Blaney Shorte representing the School at the Le Chéile Conference.

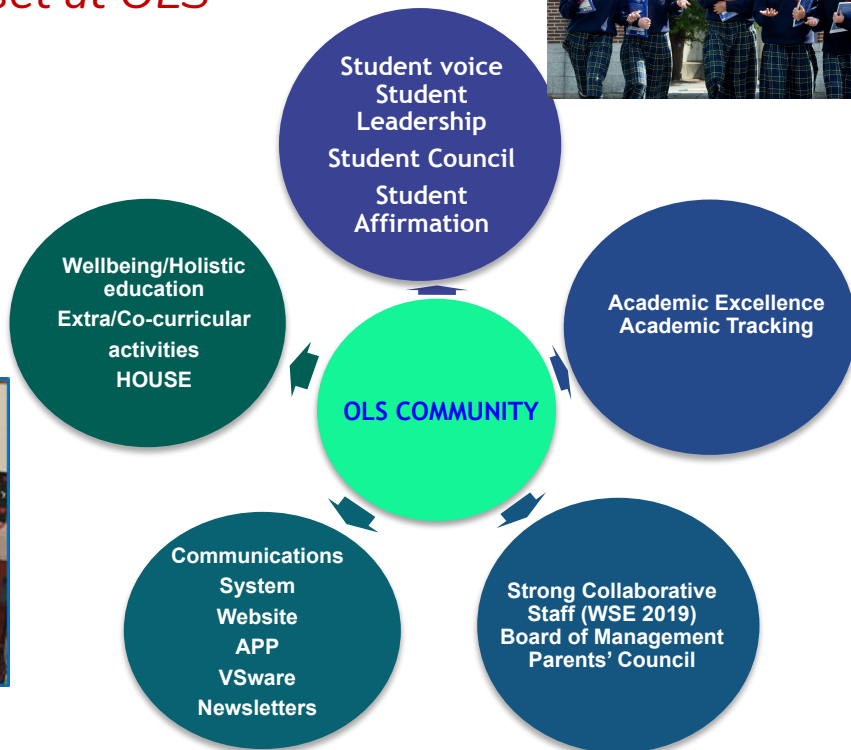


Strengths of our school

The growth mindset at OLS



*'Building a path for the future,
rooted in our heritage'*



Strengths of our school :

WSE 2019 REPORT



*'Building a path for the future,
rooted in our heritage'*



"School leaders foster a culture in which learning is prioritised, leading the school community to continuously strive for excellence."

"School self-evaluation (SSE) processes are used very effectively to manage the school's response to changing needs; the school has a high capacity for improvement."

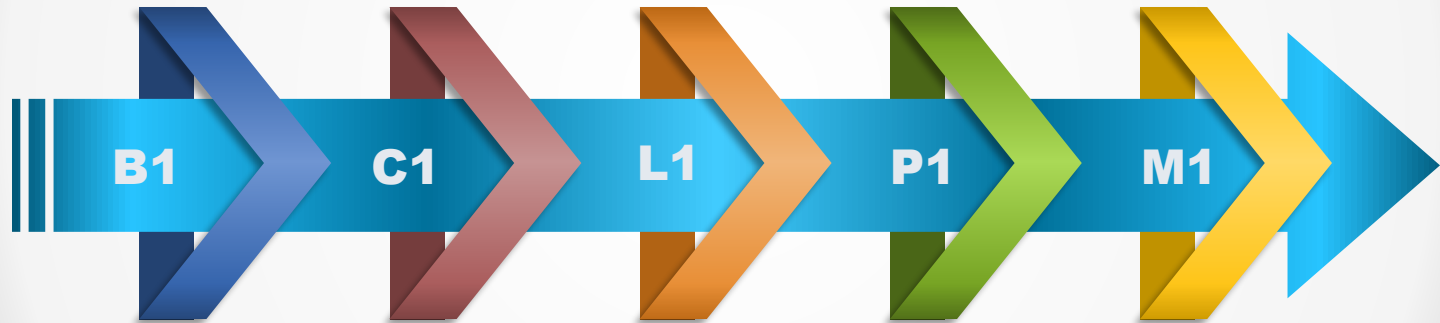
"Highly effective policies and practices to promote students' personal, social, educational and career development are in place."

"Teachers' collective practices are of a high standard in the school, with regular subject department meetings, common assessments and the use of digital platforms to share resources."

"The school values and supports partnership with parents as a means of supporting students' learning and wellbeing. They build and maintain very constructive relationships with parents. The principal builds and maintains this process through effective and regular communication with all school partners using a range of media, including the recently introduced school app. Surveys are used regularly to get feedback from staff, parents and students."



The Year System



The Horizontal

LADDER OF REFERRAL



SENIOR MANAGEMENT TEAM



YEAR TEAM





St. Muireann's House
M House



St. Patrick's House
P House



St. Brigid's House
B House



St. Colmcille's House
C House



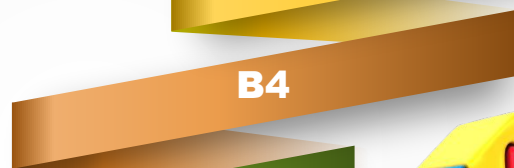
St. Lawrence's House
L House



B6



B5



B4



B3



B2



B1



THE HOUSE SYSTEM

The Vertical



HOUSE ACTIVITIES AT OLS



Our Lady's School

SCHOOL SUPPORT PLUS

Support for few

SCHOOL SUPPORT

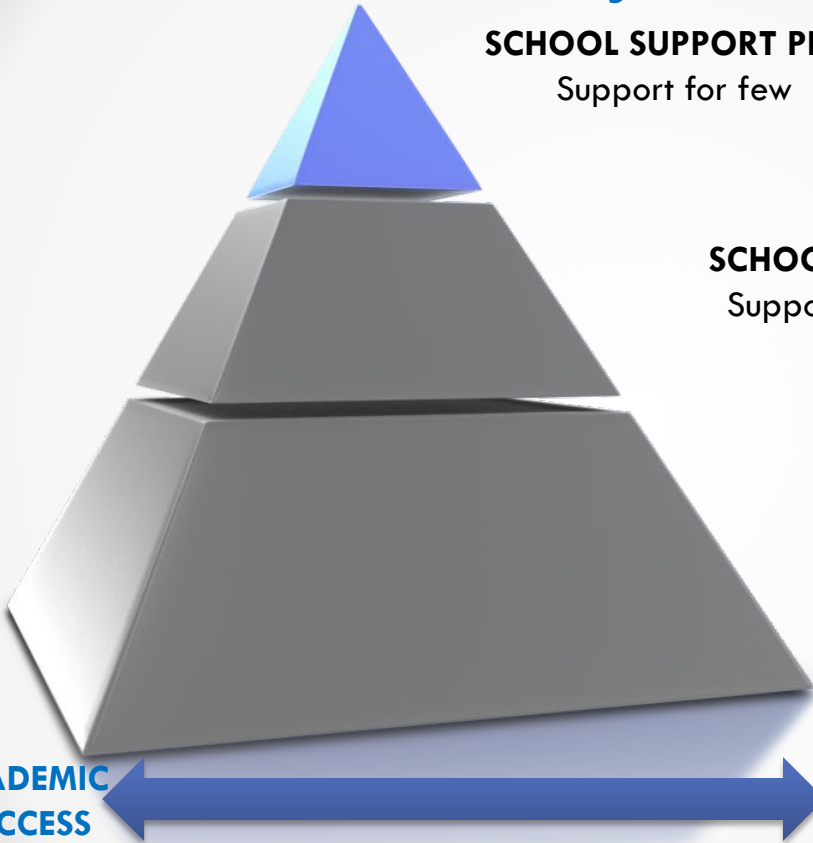
Support for some

CLASSROOM SUPPORT

Support for all

**ACADEMIC
SUCCESS**

**SOCIAL EMOTIONAL
& BEHAVIOURAL
COMPETENCE**



SUPPORT FOR ALL

Induction Programme

Year Team

House System

Care Team (SEN & Guidance Counselling)

Identification of Learning Needs - CAT IV/P-PADE

Academic Progress Monitoring

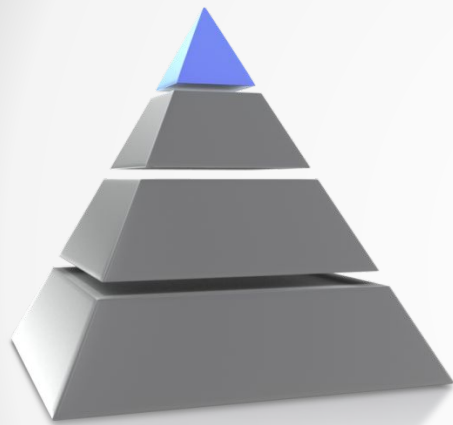
Accelerated Reader - We are a Well Read school.

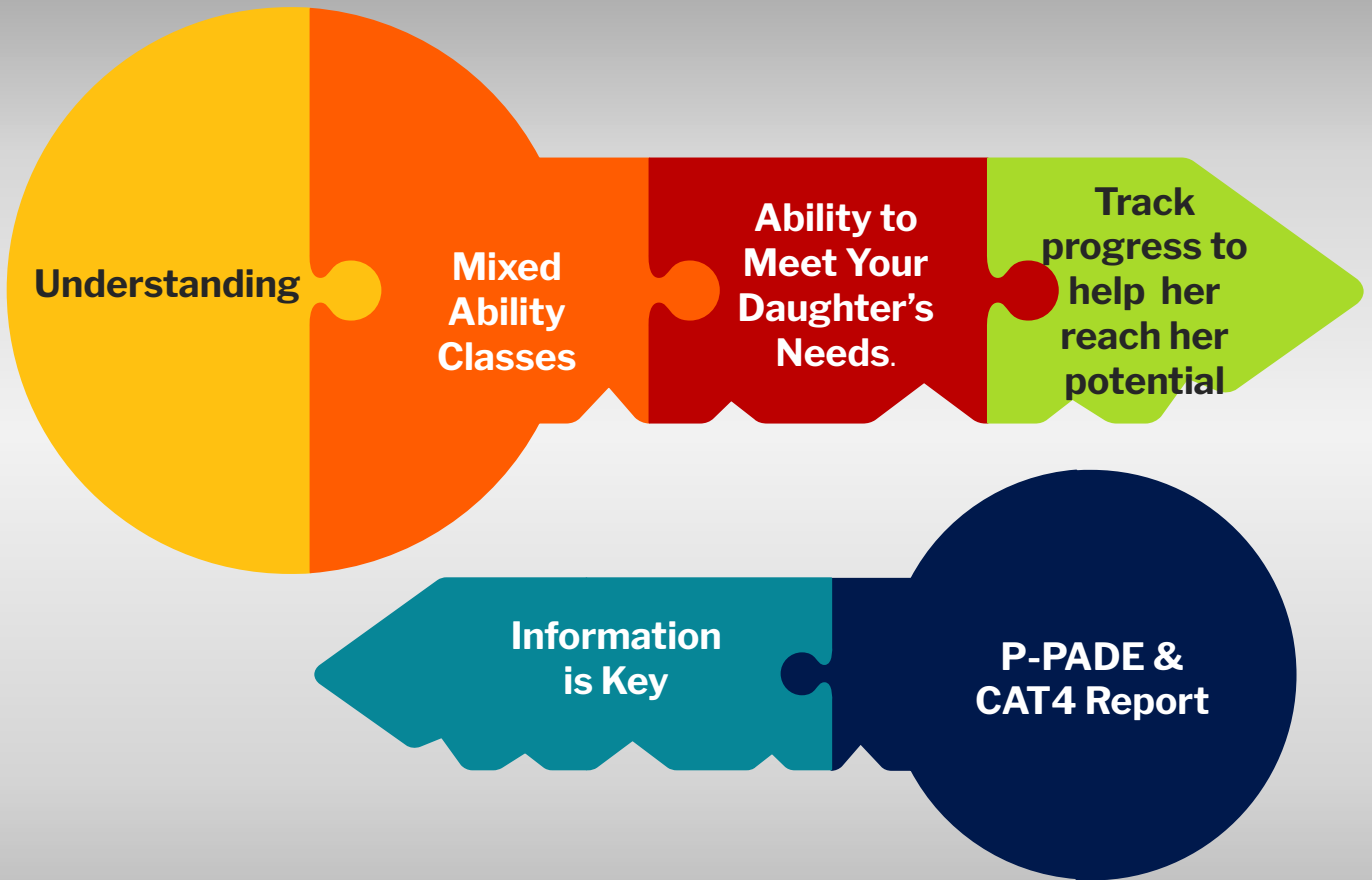
Wellbeing [SPHE/CSPE/PE /RE/Wellbeing Module](#)

Extracurricular Programme

Active School Flag (Health Promoting School)

Amber Flag





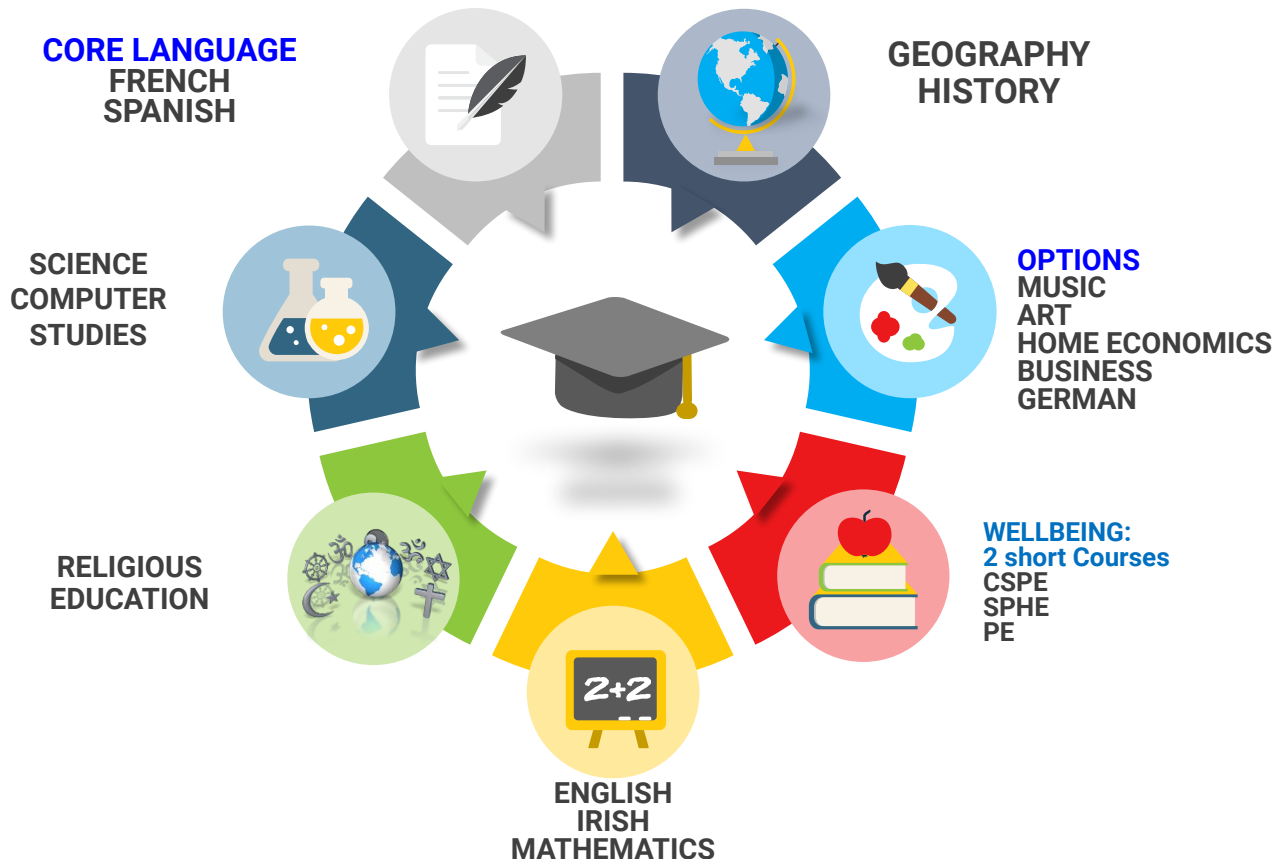
P-PADE & CAT4 – A Key to unlock important information



New Beginnings

The Transition From Primary to Secondary

1st Year Subjects





2021 1st Year
Option Subjects

BUSINESS

HOME
ECONOMICS

MUSIC

ART

GERMAN

LIMITED NUMBERS

LIMITED NUMBERS

LIMITED NUMBERS



Your daughter has the opportunity to choose her preference in a number of subject areas in what are called "Option" subjects.

As part of this process, your daughter will select preferences for **two subjects** out of a pool that includes Art, Business, Home Economics, German and Music.

PLEASE NOTE:

It may not be possible to satisfy all students' requests within the resources available to the school, however, every effort will be made to do so and therefore the ranking of preferences will be very important.

If the number of applicants for a particular subject is exceeded, then random selection will apply, generated by VSware software and students will receive a lower preference.

FRENCH



Together with selecting two "Option" subjects, your daughter must also select a Modern Foreign language.

Languages on offer include French and Spanish.

SPANISH



PLEASE NOTE:

A modern foreign language is guaranteed as a Core Subject, however, please note that the language offered for September may be impacted by the numbers choosing one or other of the languages specified above.

Subject Options

– *What do I do next?*

- This evening you will have received an email with a Google Form.
- In this email you will also have received a document outlining the courses for those subjects that are to be chosen.
- It is important that, together with your daughter, you take the time to read the information and consider which subjects are to be taken.

- The completed Form must be submitted no later than the close of day on Monday 12th April.
- If you have not received an email by this evening, please contact the school first thing tomorrow.



INDUCTION PROGRAMME



1 First Day- 2/3 hours

2 No books or lockers

**3 Meet 6th Yr Council ,
Form teachers, Year Head,
Deputy Principal**

**4 New Beginnings
Programme**



A Growth Mindset

Extra-Curricular Activities

On offer at Our Lady's School



OTHER AREAS OF LEARNING



Hockey Team
Badminton Team
Scifest
Student Council
Reading Rep
Class Captain
Charity events
GAA Team
Camogie Team
Member of the Choir
Member of the Book Club
Member of the Green Committee
Member of the Running Club
Member of the Film Club
Creative Writing Club
Mindfulness
Traditional Music Group
Games Club
Puzzle Club





EXTRA-CURRICULAR AT OUR LADY'S SCHOOL





Our Pitch Project!



Keeping Active Outdoors



COMMUNICATION

Link

Using the journal

Key link between school and home.

Students tick off work when done.

Parents to monitor journal and sign weekly.

Teachers may communicate with parents via notes section in Journal.



Our Lady's Terenure

App Menu

- School office
- News/Notifications
- Personal Notification
- News Archives
- Gallery
- Calendar
- My Student
- Absentee form
- Return to Educational Facility
Parental Declaration Form
- Late Note
- Chat Boards
- Permission To Leave
- Consent form
- Vshare

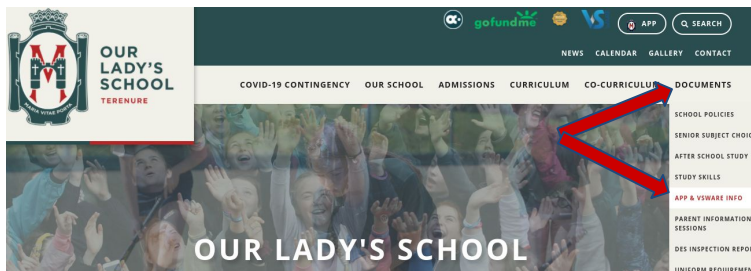
Academic



School App

→ **Single touchpoint** for mainstream school communication.

→ **Download** from your App store: Our Lady's Terenure
→ Further instructions available on the website:



School ⇌ **Home**

- News & information
- Link to VShare & Easy Payments
- Notification of late arrival/unexplained absence, etc.

Home ⇌ **School**

- Absence notification (including late/leave early)
- Permission/Consent forms



**OUR
LADY'S
SCHOOL**
TERENURE



NEWS CALENDAR GALLERY CONTACT

COVID-19 CONTINGENCY OUR SCHOOL ADMISSIONS CURRICULUM CO-CURRICULUM DOCUMENTS

OUR LADY'S SCHOOL

Terenure

WELCOME

ADMISSIONS

NEWS

EMPOWERING OUR STUDENTS TO REACH THEIR FULL
POTENTIAL

ETHOS

ACADEMIC
EXCELLENCE

WELLBEING

HOUSE

Any enquiries should be emailed to
incomingfirstyears@olschool.ie



Thank you!

*We look forward to welcoming your daughter to
Our Lady's School*

